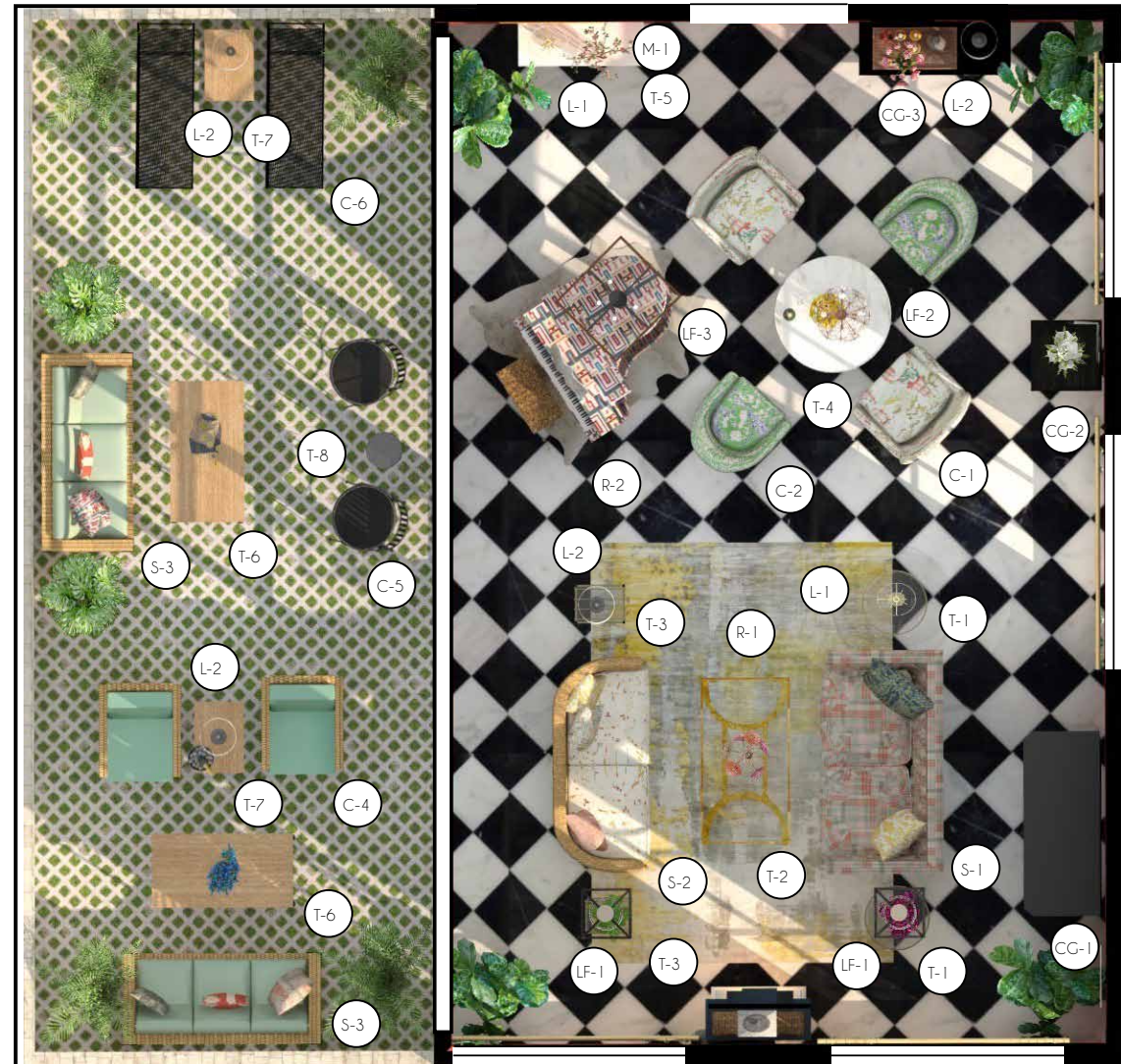


I love Paris

Lights up. We're in the living room of a top floor apartment in Paris. Ella Fitzgerald, a legendary jazz vocalist, is standing by a boldly patterned piano singing, while Cole Porter, a renowned composer and songwriter, accompanies her to one of his newly penned songs. The room is filled with light illuminating a loud mix of patterns and saturated colors on exquisitely tailored and timeless furniture pieces. The intricacy of her voice as she moves from note to note seems to mimic all of the many colors and textures that surround her.

ELLA: *(Singing)* Every time I look down on this timeless town
Whether blue or gray be her skies.
Whether loud be her cheers or soft be her tears,
More and more do I realize:
I love Paris in the springtime.
I love Paris in the fall.
I love Paris in the winter when it drizzles,
I love Paris in the summer when it sizzles.
I love Paris every moment,
Every moment of the year.
I love Paris, why, oh why do I love Paris?
Because my love is near.



LIVING ROOM

SCALE: NTS



LF-2



LF-3



CG-2



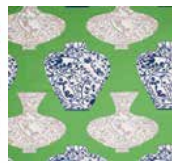
C-1



C-2



T-4



T-5



L-2



M-1



CG-3



R-2



DROLET DESIGNS



LF-1



R-1



CG-1



S-1



L-1



T-1



T-2



S-2



L-2



T-3



DROLET DESIGNS

